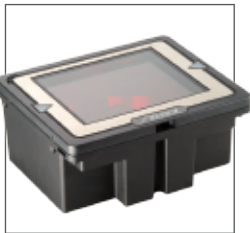
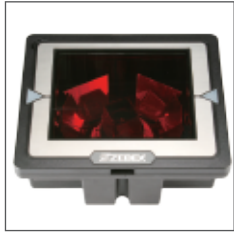


# Z-6181

## Dual-Laser Omnidirectional In-Counter Scanner



- Unique dual-laser technology
- Proprietary Z-SCAN<sup>+</sup> technology
- Strict IP54 standards
- Barcode stitching capable
- Instant “objective-fly-by” automatic wake-up
- Field-replaceable scratch-resistant window
- Visual diagnostic blue LED
- Easy on-site configuration and upgradeability

The Z-6181 in-counter laser scanner is a powerful scanning solution specifically designed for high-traffic environments with limited space. Like its big brother the Z-6180, the Z-6181 features dual-laser technology that enables 32 scan lines for enhanced speed and accuracy, but manages to do so in a unit that measures significantly less in size than comparable scanners.

With proprietary Z-SCAN<sup>+</sup> hardware decoding technology, the Z-6181 is able to decode virtually every 1D barcode in existence with lightning-quick speed. The visual diagnostic blue LED on the Z-6181 provides immediate visual user feedback, increasing both accuracy and productivity.

Experience the difference dual-laser technology with the Z-6181 from ZEBEX.

### OPERATIONAL

<b>Light Source</b>	Dual 650 nm visible laser diodes (VLD)
<b>Depth of Field</b>	0 – 216 mm (UPC/EAN 100%, PCS=90%)
<b>Number of Scan Lines</b>	32
<b>Scan Rate</b>	3,200 scans per second
<b>Scan Pattern</b>	8 directions of scan field
<b>Minimum Bar Width</b>	5 mil @ PCS=90%
<b>Print Contrast</b>	30% @ UPC/EAN 100%
<b>Indicators (LED)</b>	Two-color LED (blue & red)
<b>Beeper Operation</b>	Programmable tone & beep time
<b>System Interfaces</b>	Keyboard, RS-232C, HID USB, aux. RS-232

### PHYSICAL

<b>Dimensions</b>	(L)232.0 × (W)192.0 × (H)102.0 mm
<b>Weight</b>	2,100 g

### POWER

<b>Power Supply Voltage</b>	100 – 240 VAC, 50/60 Hz
<b>DC Input Scanner</b>	+12V, -12V, +5V

### REGULATORY

<b>Laser Class</b>	CDRH Class IIa; IEC 60825-1: Class 1
<b>EMC</b>	CE & FCC DOC compliance

### ENVIRONMENTAL

<b>Operating Temperature</b>	0°C – 40°C (32°F – 104°F)
<b>Storage Temperature</b>	20°C – 60°C (-4°F – 140°F)
<b>Humidity</b>	5% – 95% RH (non-condensing)
<b>Light Levels</b>	Max. 4,000 Lux (fluorescence)
<b>Drop Durability</b>	Designed to withstand 1.0M drops
<b>Environmental Sealing</b>	IP54 rated sealing
<b>Compatibility</b>	EAS compatible



Product availability and specifications depend on territory market strategy; all are subjects to change without prior notice. ZEBEX is the trademark of ZEBEX INDUSTRIES INC., all rights reserved.

**ZEBEX**  
www.zebex.com